

MN Fuel Schedule Update

This update adds to the Configure Minnesota Schedules screen (under Setup – Bill of Lading) a section entitled Current Tax Rates. These rates are what will be used to calculate the taxes on the Tax Forms.

Configure Minnesota Schedules

Setup information specific to Minnesota Schedules.

FEIN: 41-0846057 Suffix: 70

MN License No.: 9030112

Output Directory: \\BESTOIL02\REDRIVER\RRS\MNEDI

Contact Person: Kathy Port

Contact e-mail: kathy@bestoilcompany.com

Current Tax Rates

Gasoline/Alcohol	0.275	Aviation Gasoline	0.05
Special Fuel	0.275	Jet Fuel	0.05
E-85	0.19525	LPG	0.20625
CNG	0.0023914	Inspection Fee	.001
LNG	0.165	Cleanup Fee	

Include Sales Tickets on schedule MN-2C

Use Terminal ID on Printed Reports

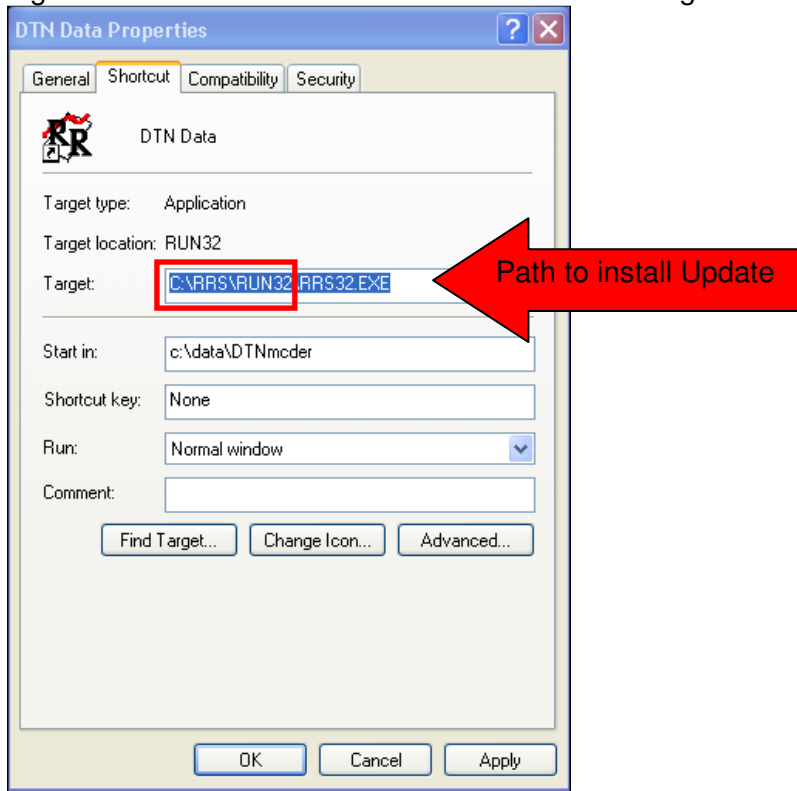
Cancel Ok

1. Gasoline/Alcohol is used on line 13 of form PDA-46, it is used on totals for gasoline, alcohol, E-85 and aviation gasoline.
2. Special Fuel is used on line 9 of form PDA-49 and is used on Kerosene, diesel and biodiesel.
3. E-85 is used on line 17c for form PDA-46 and is subtracted from Gasoline/Alcohol to show the number 0.07975.
4. CNG is used on line 2 of PAF-1
5. LNG is used on line 3 of PAF-1
6. Aviation Gasoline is used on line 17a of PDA-46 and is subtracted from Gasoline/Alcohol to show the number 0.225.
7. Jet Fuel is used on line 9 of PDA-49
8. LGP is used on line 1 of PAF-1

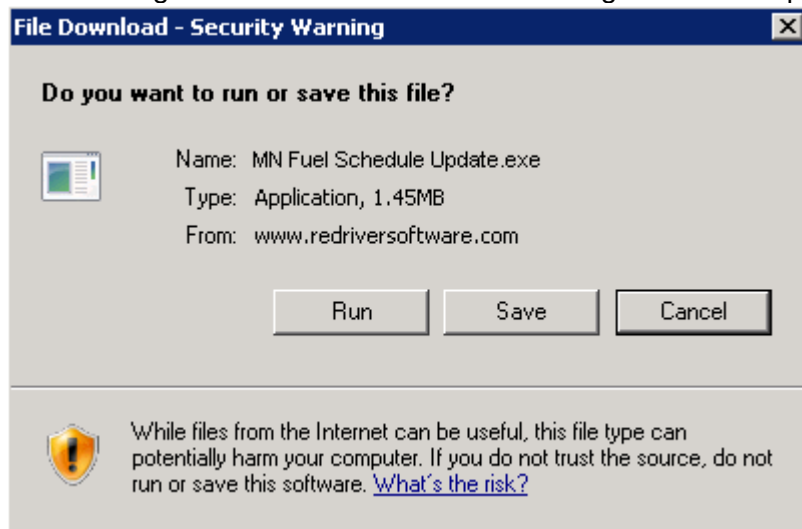
Installing MN Schedule Update

Please Note: All users must be out of Red River to install this update. Before closing Red River click on Tools – Remove RRS.DBF

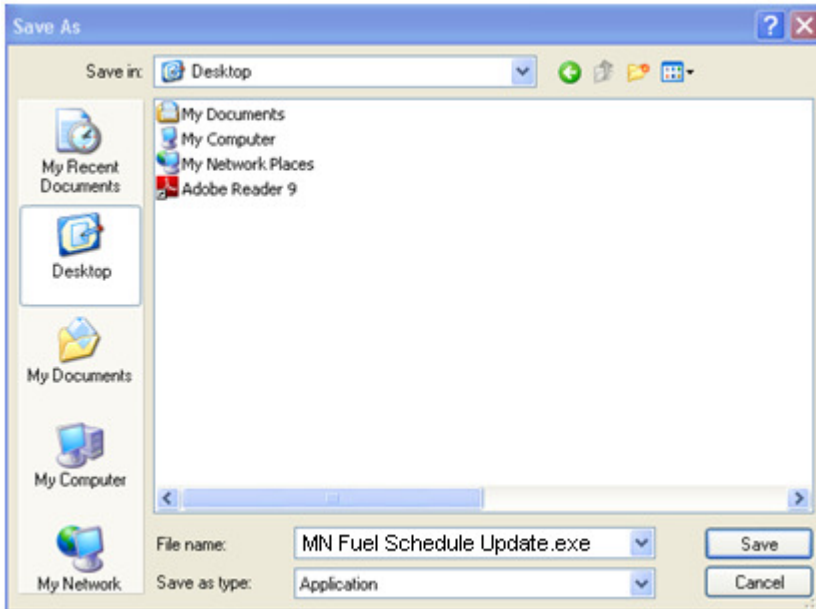
1. Determine the path to your run directory
Right click on the Red River icon and look at the Target field.



2. Download file from above to your desktop
3. After clicking the Download button the following screen will appear



4. Click Save and the following screen will appear



5. Choose the Desktop. This will save the file on your desktop with the icon shown below

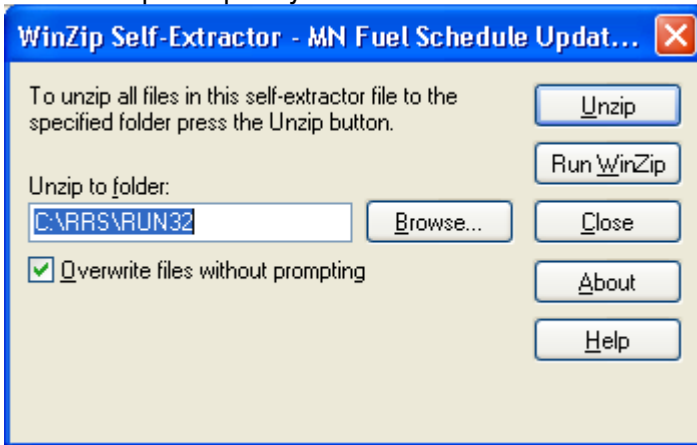


6. Make sure everyone is out of Red River while performing the update.
7. Double click on the file to run the update.
8. The following message will appear

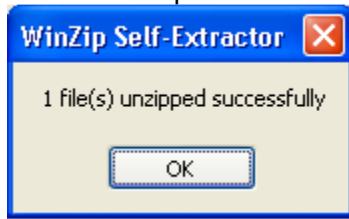


Click OK to continue

9. Fill in the update path you determined from above into the Unzip to Folder field



10. Click on Unzip



11. Click OK and the update has been installed.

12. Open Red River and let fully load (this may take a few minutes longer than normal).

13. Allow other users to enter Red River.