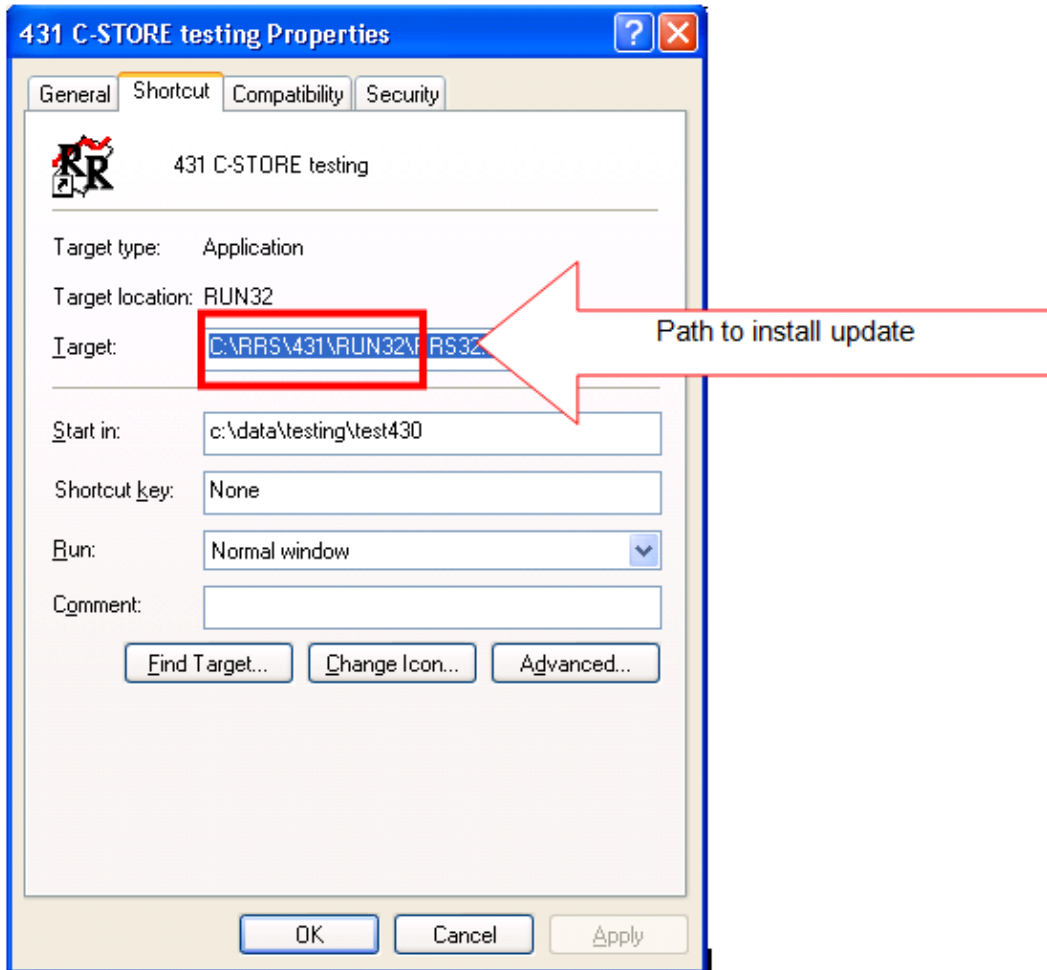


This will update the Fuel Tax rates used to calculate taxes on the MN EDI Schedules

Determine the path to your run directory

Right click on the Red River Icon and look at the Target field.



2. Download file from below to your desktop.

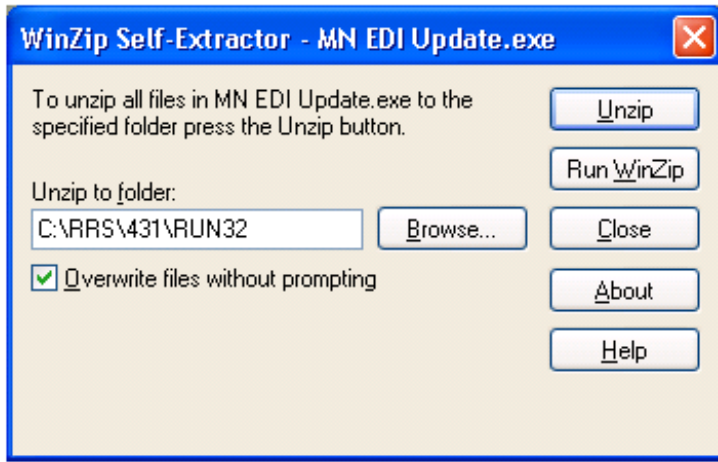


MN EDI  
Update.exe

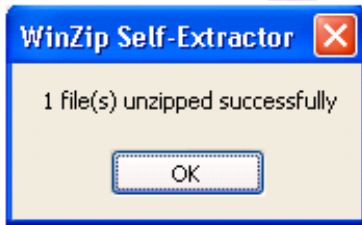
3. Make sure everyone is out of Red River while performing the update. (It should only take a couple of minutes to do the update)
4. Double click on the file to run the update.
5. Fill in the update path that you determined from above into the Unzip to folder field



2311 45 St. SW • Suite B • Fargo, ND 58104  
701-281-0781 • 800-397-0780 • Fax: 701-281-2653  
Visit us at: [www.RedRiverSoftware.com](http://www.RedRiverSoftware.com)



6. Click on Unzip.



7. Click OK and the update has been installed.